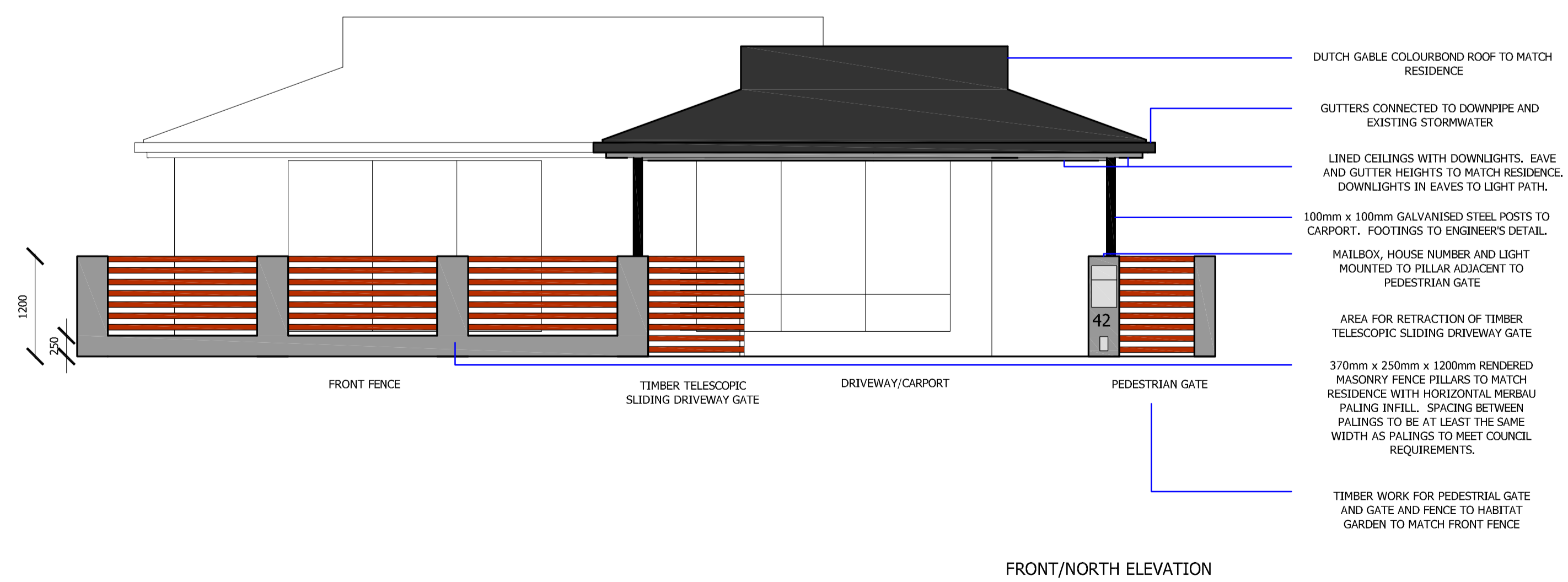


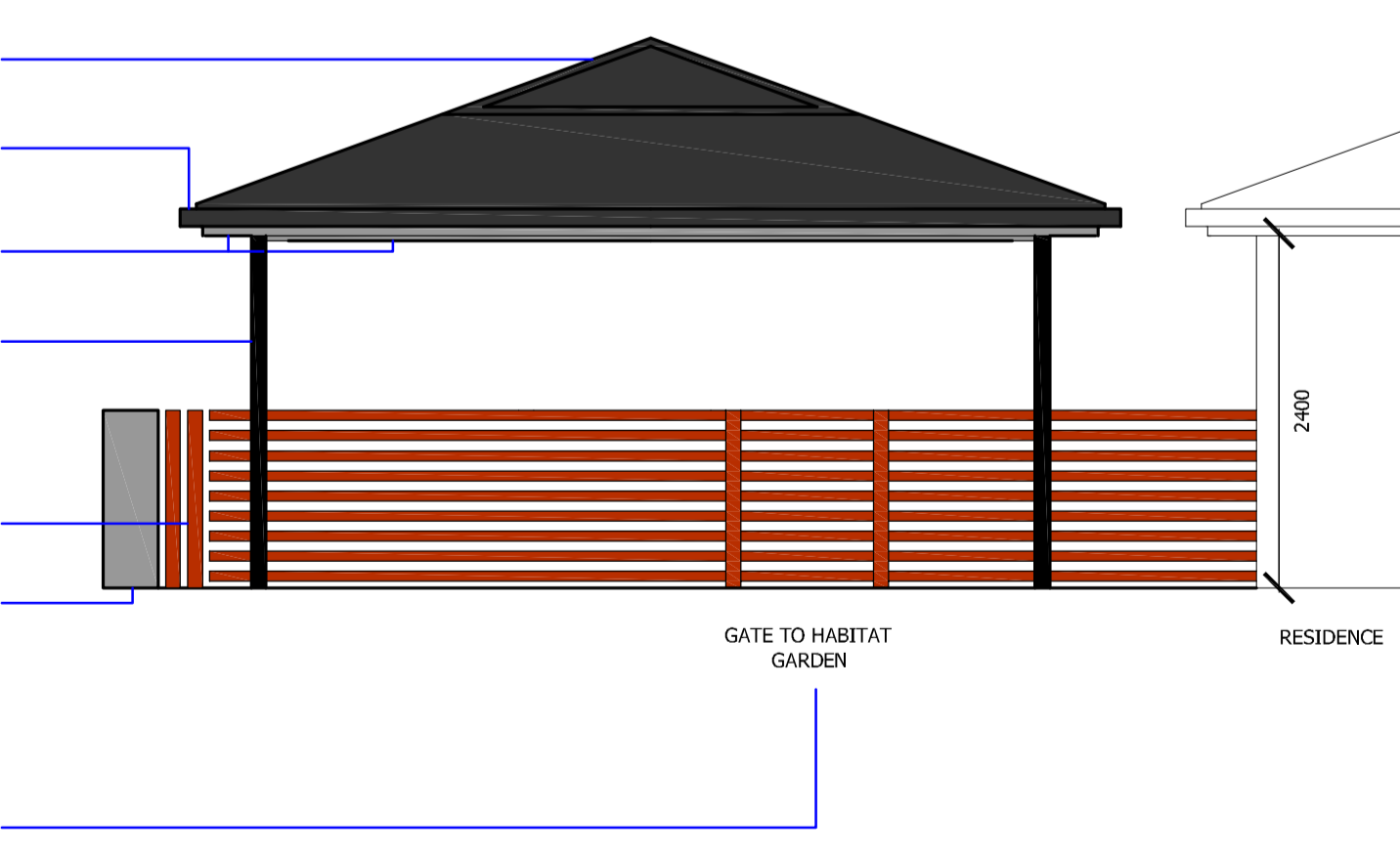
PLAN

PLANT SCHEDULE						
SYMBOL	BOTANICAL NAME	COMMON NAME	SIZE AT MATURITY	QTY	POT SIZE	APPROX SPACING
<b>TREES</b>						
BT	<i>Banksia integrifolia</i>	Coast Banksia	15 x 6	1	300 mm	-
CR	<i>Ceratopetalum gummiferum</i> 'Albery's Red'	NSW Christmas Bush	5 x 3	1	300 mm	-
<b>SHRUBS</b>						
SC	<i>Syzygium 'Cascade'</i>	Cascade Lilly Pilly	hedge to 2m	9	300 mm	1 m
HS	<i>Hakea sericea</i>	Silky Hakea	maintain to 2 m	3	200 mm	1 m
GB	<i>Grevillea buxifolia</i>	Grey Spider Flower	1.5 x 1 m	2	200 mm	-
GL	<i>Grevillea linearifolia</i>	Small Spider Flower	1.5 x 1 m	3	200 mm	750 mm
AM	<i>Acacia myrtifolia</i>	Myrtle Wattle	1 x 1.5 m	1	200 mm	-
LP	<i>Leptospermum 'Pink Cascade'</i>	Pink Cascade Tea Tree	1 x 1.5 m	1	200 mm	-
BS	<i>Banksia spinulosa</i> var. <i>spinulosa</i> 'Birthday Candles'	Birthday Candles Banksia	0.5 x 1 m	3	200 mm	750 mm
<b>TUFTIES, GROUND COVERS AND CLIMBERS</b>						
LR	<i>Lomandra longifolia</i> 'Tanika'	Tanika Mat Rush	0.6 x 0.6	8	140 mm	300 mm
DC	<i>Dianella caerulea</i> 'Little Jess'	Little Jess Flax Lily	0.4 x 0.4	22	140 mm	200 mm
SM	<i>Scaevola 'Maue Clusters'</i>	Maue Cluster Fan Flower	groundcover	3	140 mm	600 mm
MP	<i>Myoporum parvifolium</i> 'Yareena'	Creeping Boobialla	groundcover	3	140 mm	500 mm
VH	<i>Viola hederacea</i>	Native Violet	groundcover	27	140 mm	400 mm
HS	<i>Hibbertia scandens</i>	Climbing Guinea Flower	climber trained to fence	1	140mm	-
<b>POND PLANTS</b>						
IN	<i>Isolepis nodosa</i>	Knobby Club Rush	0.7 x 0.5 m	18	140 mm	300 mm
OO	<i>Ottelia ovalifolia</i>	Swamp Lily	0.5 x 3 m	1	140 mm	-

PLANT SELECTION



FRONT/NORTH ELEVATION



SIDE/WEST ELEVATION

**NOTES**

1. DIMENSIONS AND LEVELS ARE BASED ON SITE MEASUREMENTS AND ARE PRELIMINARY ONLY. MEASUREMENTS, LEVELS, SITE CONDITIONS AND LOCATION OF UNDERGROUND SERVICES TO BE VERIFIED PRIOR TO CONSTRUCTION.
2. DO NOT SCALE FROM DRAWINGS. USE FIGURED DIMENSIONS ONLY.
3. DRAWING ISSUED FOR DESIGN PURPOSES ONLY.
4. REMOVE ALL EXISTING VEGETATION, SUBJECT TO COUNCIL APPROVAL.

**LANDSCAPE PLAN 2**

(LANDSCAPE DESIGN)  
MEMBER AILDM

DRAWING NO: LAP.02  
ISSUE: 3

SCALE: 1:50 @ A1

Lic No. 109361C  
LCA Member No. F401  
6 Aldinga Place  
Forestville NSW 2087  
Ph/Fax 02 9453 0037  
Mobile 0425 202 307